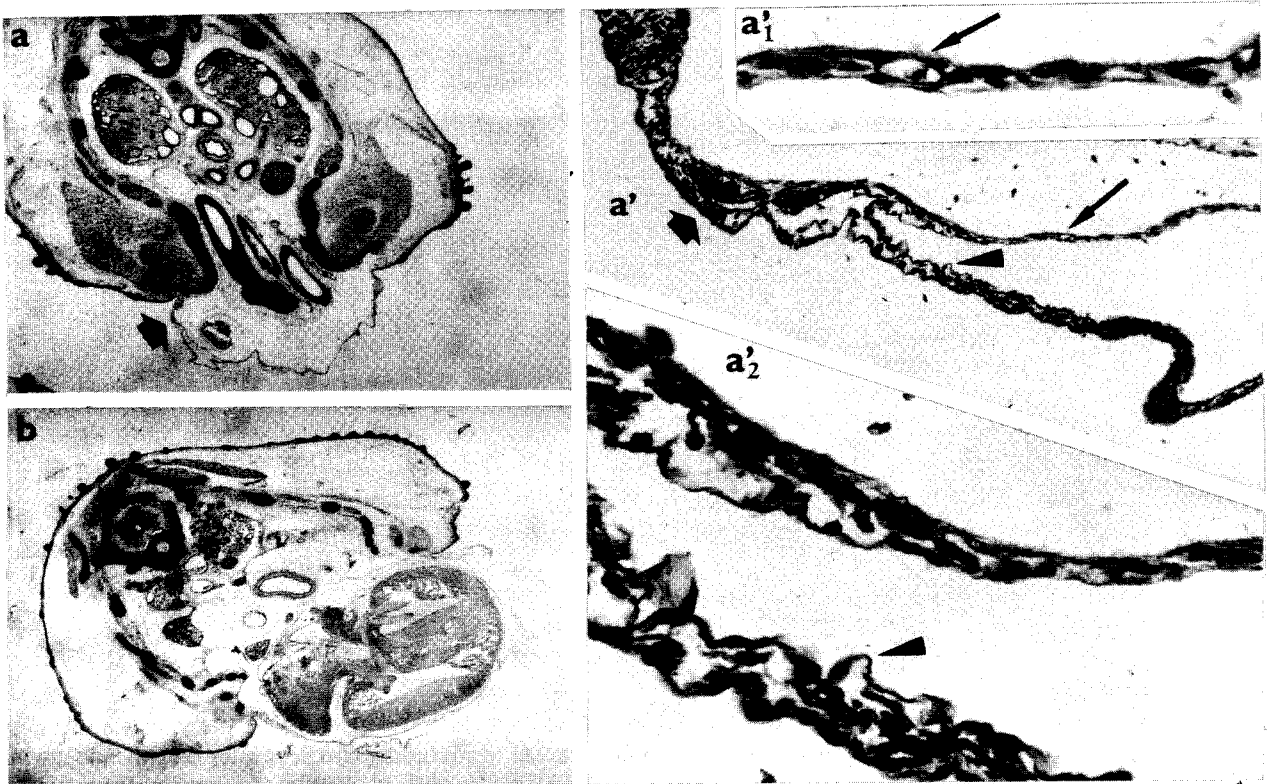


*Fig. 4.* **a, b** - selected serial transversal sections of control embryo sampled on day 5. **c-d** comparable sections as shown in **a-b** of H-treated embryos. Arrows indicate the abrupt transition of the lateral body wall, containing PM, into MR.



*Fig. 5.* **a, b** - Serial transversal sections of an embryo sampled 4 days after H administration with developing EC. Arrows of different qualities indicate spots on the MR shown under higher magnification 58 $\times$  in **a'** and 116 $\times$  in **a'1** and **a'2**.