

Fig. 1. Apoptotic enterocytes (arrow) are localized predominantly in the necks of intestinal crypts in the experimental group. TUNEL method. Magnification 63x.

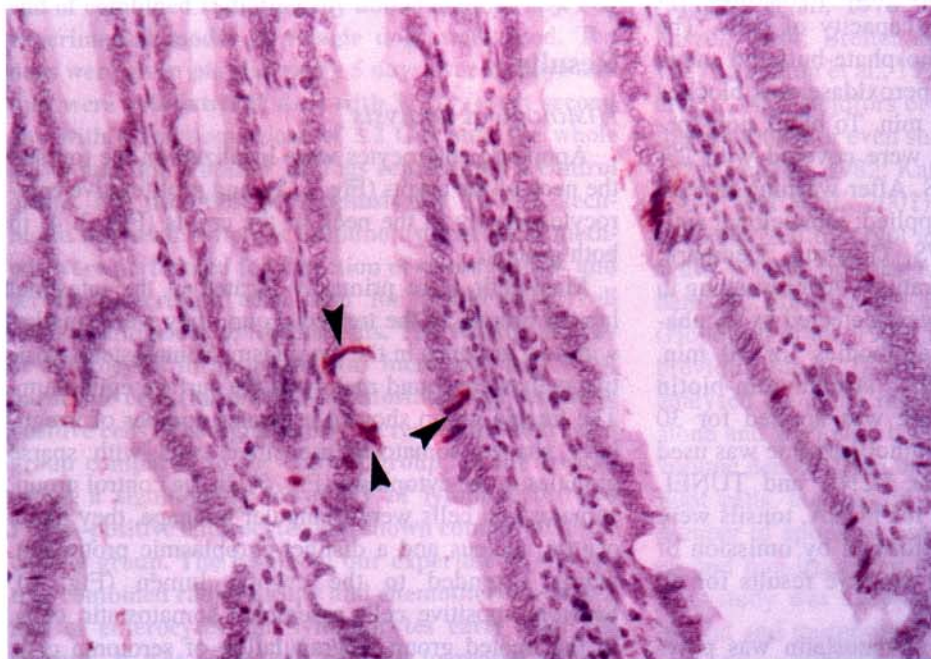


Fig. 2. Irregular nuclei of apoptotic enterocytes (arrows) in the experimental group. TUNEL method. Magnification 160x.

Table 1. Morphometrical analysis of dogs treated with combined radiotherapy and chemotherapy versus the control group of dogs.

Variable	Treated group	Control group	P
Vv of apoptotic enterocytes	0.08 ± 0.009	0.04 ± 0.005	< 0.01
Vv of PCNA-positive enterocytes	0.16 ± 0.06	0.3 ± 0.04	< 0.01
Vv of somatostatin-positive cells	0.0048 ± 0.0008	0.0033 ± 0.0008	< 0.05
Vv of serotonin-positive cells	0.014 ± 0.006	0.0089 ± 0.0007	< 0.05
Vv of mast cells	0.017 ± 0.004	0.0073 ± 0.0002	< 0.05
Vv of lymphocytes	0.012 ± 0.0007	0.018 ± 0.001	< 0.05